

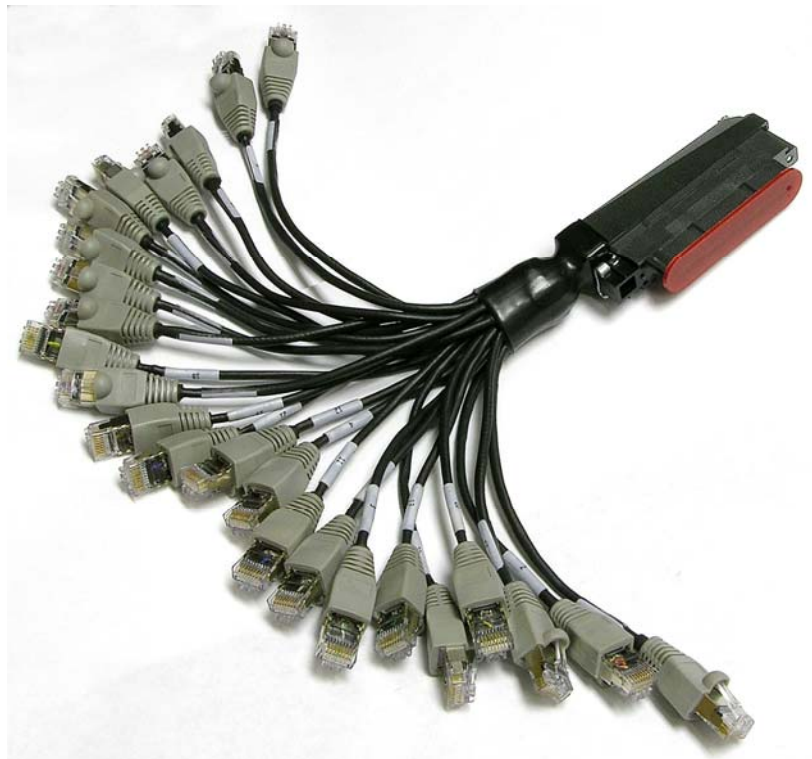


"Results You Can Count On"

RJ21X1-RJ45X24

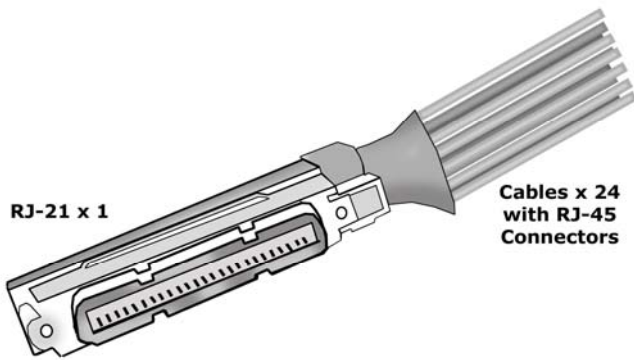
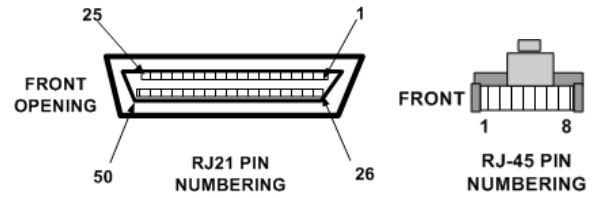
RJ-21(x1) to RJ-45 (x 24) Interface Adaptor

- **Conveniently interfaces 24 RJ-45 connectors to 1, 50-Pin RJ-21 connector**
- **Designed to minimize crosstalk**
- **Keeps wires organized**



Varying cable lengths optimize the connection to Telebyte's line modules installed in the 458-3SLx three-slot chassis.

RJ21X1-RJ45X24 Interface Adaptor (continued)



Channel	RJ45 Pin	RJ21 Pin	RJ21 Pin	RJ45 Pin
1	5	1	26	4
2	5	2	27	4
3	5	3	28	4
4	5	4	29	4
5	5	5	30	4
6	5	6	31	4
7	5	7	32	4
8	5	8	33	4
9	5	9	34	4
10	5	10	35	4
11	5	11	36	4
12	5	12	37	4
13	5	13	38	4
14	5	14	39	4
15	5	15	40	4
16	5	16	41	4
17	5	17	42	4
18	5	18	43	4
19	5	19	44	4
20	5	20	45	4
21	5	21	46	4
22	5	22	47	4
23	5	23	48	4
24	5	24	49	4
	No connect	25	50	No connect